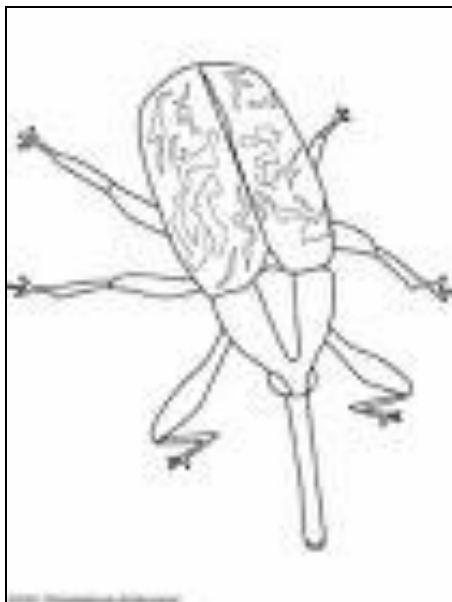


The World's Only Monument To A Pest!

The Egyptians have obelisks erected to the glory of the pharaohs; the Italians have Roman arches constructed to commemorate historic victories on the battlefield; Europe has Renaissance art created to symbolize the beauty of Man and his relationship to God...but only Enterprise, Alabama can boast having the world's only monument to a pest!

“Why?” you ask! Well, one man's pest is another man's ticket to success, although I doubt that John Henry Carmichael would have been convinced about that in 1881. That's

The pest!



when he settled in Coffee County and opened a store in a rural area. In 1882, as others moved to the area, the local post office relocated to Carmichael's new community, and the town of Enterprise was incorporated in 1896 with a population of 250 hard-working souls. Two years later, the Alabama Midland Railway Company located in Enterprise, and with it came growth and progress. By 1906, the population had grown to 3,750.

Disaster struck in 1915, as the Mexican boll weevil found its way into Alabama from [we hate to say it] Texas. The boll weevil wreaked havoc on the cotton crop. In Coffee County, almost 60% of the cotton production was destroyed. Farmers faced bankruptcy and the area economy was at stake. What to do! What to do!

They switched crops! Farmers turned to peanuts and other agricultural items to overcome the damage wrought by the insidious boll weevil. By 1917, Coffee County produced and harvested more peanuts than any other county in the nation. By 1993, the county could boast 128,000 acres planted in peanuts. In gratitude for the lessons taught, the residents erected the Boll Weevil Monument in the center of downtown Enterprise.

The cover!

The monument!



It was dedicated on December 11th, 1919...a symbol of Man's willingness and ability to adjust to adversity. The base of the monument reads: "In profound appreciation of the boll weevil and what it has done as the herald of prosperity this monument was erected by the citizens of Enterprise, Coffee County, Alabama."

...I love happy endings!

